

# Planmeca SteriCenter SCX5

**Rigorous** with protocol, **easy** on integration



# STERICENTER HISTORY

Triangle's commitment to the dental profession began in 1991, with the introduction of the Steri-Center 9000, the first sterilization center designed specifically for dental practices. The creation of the Steri-Center was achieved by understanding the entire sterilization process by conducting scientific research on sterilization and infection control. The result was the "Instrument Recirculation Procedure" which transformed the sterilization process into an easier method. The main objective for our team is to design products that create a safe, efficient and organized environment for practices. Over time Triangle has launched four different generations of the Steri-Center 9000. Through our continual advancements and improvements the SXC5 continues to be recognized as the benchmark of the industry.

## Today : SteriCenter SCX5

The need is greater than ever to conform to modern purpose - built practices and incorporate technology while still protecting patients and clinicians.

## 2002 : SteriCenter 9000x.4

The introduction of modular components permitted adaptation to the practice's existing environments without impeding workflow.

## 1992 - 1996 : SteriCenter 9000x.2 and 9000x.3

Continual evolution allowed for improving sterilization procedures and workflow to meet changing practice needs.

## 1990 : SteriCenter 9000x

Product development created the first cabinet system to emphasize sterilization procedures by increasing the efficiency of the assistant while reducing the risk of cross-contamination.

**Top:** Steri-Center 9000x.3 on display in 1996

**Bottom:** Steri-Center 9000x.2 shown in 1992



# INSTRUMENT RECIRCULATION PROCEDURE

## 10 STEPS TO STERILIZATION



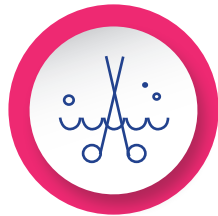
### 01 Protective Equipment

Protect dental workers and patients against hazards and cross-contamination.



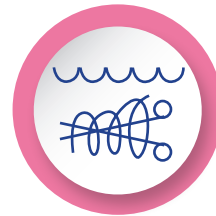
### 02 Waste Management

Dispose and process regulated and non-regulated waste according to OSHA recommendations.



### 03 Pre-Soaking

Make cleaning easier and more efficient by preventing drying of patient material.



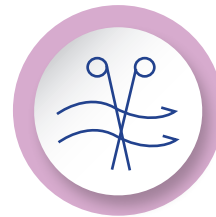
### 04 Cleaning

Increase cleaning efficiency through an ultrasonic cleaning process.



### 05 Rinsing

Remove any dislodged debris or remaining cleaning products.



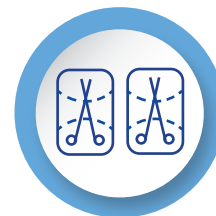
### 06 Drying

After cleaning, instruments should be dried prior to being wrapped or packaged and sterilized.



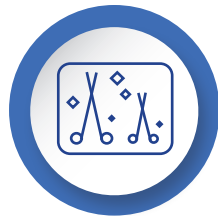
### 07 Lubrication

Handpieces need to be lubricated to maintain optimal quality and usability.



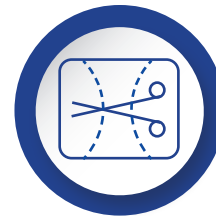
### 08 Packaging

Instruments must be wrapped or bagged to protect items and maintain their sterility.



### 09 Sterilization

Wrapped or bagged instruments must go through a sterilization process to protect dental personnel and patients from any infection.



### 10 Storage

Store instruments in a safe and dry environment to maintain sterility and prevent contamination.



# FEATURES AND BENEFITS

modular and interchangeable columns



pull out Corian® equipment shelves



LED lighting



optional hands-free features (water and storage doors)

built-in soap, gloves and paper dispenser



## FEATURES AND BENEFITS

pre-soaking  
drawers

soiled and clean  
color coding



knee operated  
waste system

upgradable  
configurations

### Exceptional Features

The SteriCenter SCX5 is a combination of ergonomic design, research, and workflow efficiency. It is built to provide workstations that improve clinical efficiency, connectivity, and simplify the sterilization, infection control process.

- Foot-activated system for sterile hands-free instrument storage and built-in dryer system to help ensure proper infection control is maintained.
- Retractable chrome faucet Corian® countertops make cleaning of the work surface easy.
- Sturdy construction, ease of installation and greater service access.
- Modular column design and upgradability for easy customization to fit your practice layout or specific needs.



## CUSTOMIZATION

**Configure** your SteriCenter according to your needs.

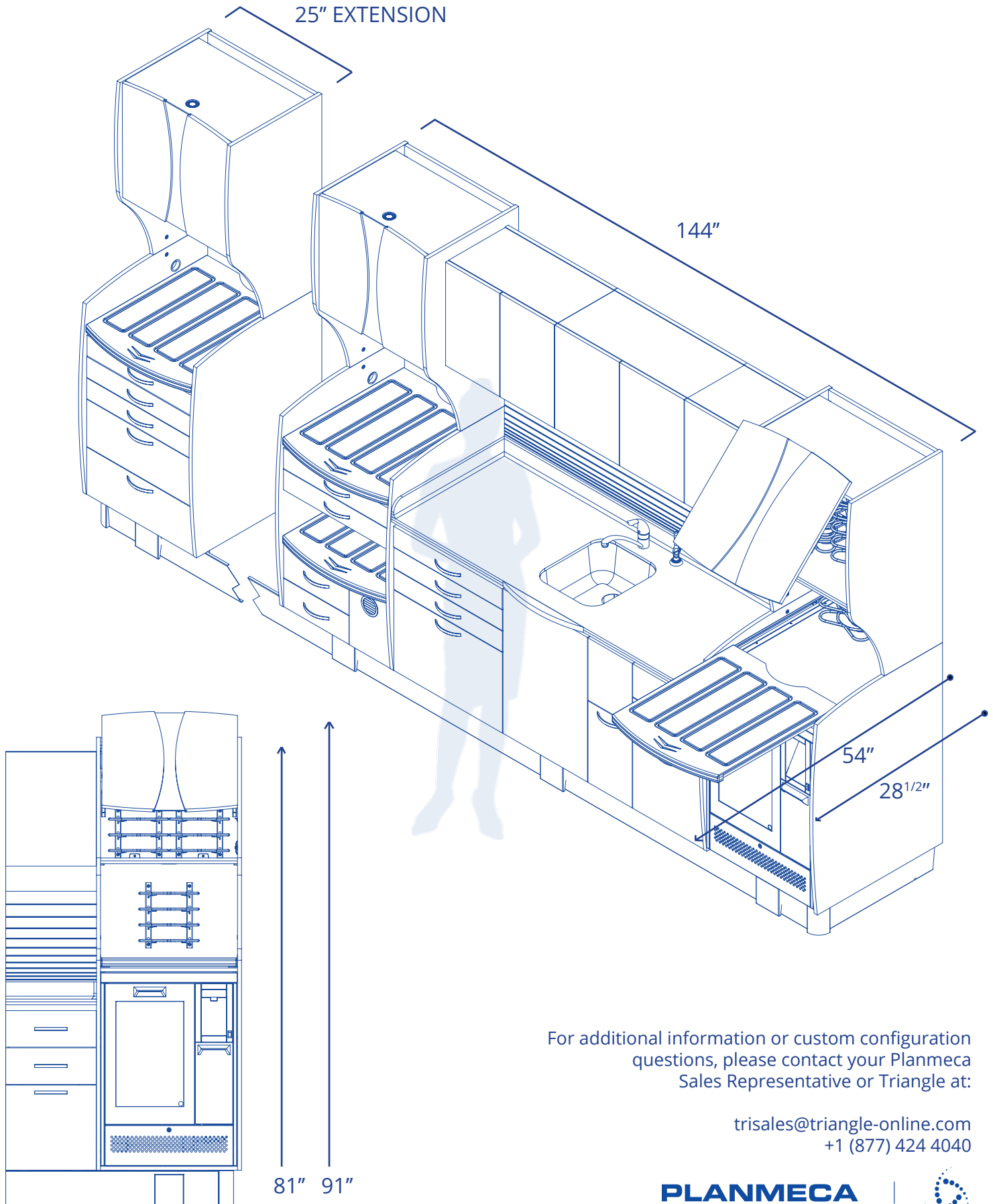


### **Dental cabinetry is not office furniture**

A dental cabinet is more than drawers, sink, and storage. Triangle's SterCenter system was designed to follow the latest CDC, OSHA and ADA recommendations in sterilization and infection control. A modern system means more than just premium materials or colors. As applied to sterilization cabinets, modern means clinician-focused design, protection, ease of use, durability, and functionality.

Our modular concept facilitates customizing your SteriCenter to fit your practice precisely. Does your current sterilization system maximize workflow direction in all configurations? The flexibility of your SteriCenter can help you create or expand the right environment to protect patients and clinicians.

# TECHNICAL INFORMATION



For additional information or custom configuration questions, please contact your Planmeca Sales Representative or Triangle at:

[trisales@triangle-online.com](mailto:trisales@triangle-online.com)  
+1 (877) 424 4040

**PLANMECA**





**PLANMECA** | tri:angle

**Triangle Furniture Systems Inc.**  
 180 Rue Aimé-Vincent, Vaudreuil-Dorion, QC J7V 5V5  
 +1(877) 424-4040  
 trisales@triangle-online.com

© Planmeca U.S.A. Inc. 2019 All Rights Reserved