

Evolution™ Series CABINETRY



Triangle's Contribution to the Dental Profession

In 1991, Triangle introduced the Steri-Center 9000 into the market, the first sterilization center designed for use in dental practices. The creation of the Steri-Center was based on the *Instrument Recirculation Procedure* — a comprehensive sterilization process developed by Triangle through extensive scientific research into infection control and now the accepted standard by an extensive list of certifying bodies, including the ADA, CDC, OSAP, and OSHA.

Since then, Triangle has launched five new generations of the Steri-Center 9000, and the current model—the SCX5—is still considered to be the industry standard.

The Planmeca Group acquired Triangle Furniture Systems in 2005, adding cabinetry to its range of state-of-the-art products. Triangle continues to develop and manufacture sterilization and operator equipment at its factory in Montreal, Canada and are available through the Planmeca distribution network worldwide.

Triangle's mission has always been to create a functional and supportive environment, while assisting dental staff in complying with recommended performance practices.



01
Protection equipment



02
Waste management



03
Pre-soaking



04
Cleaning



05
Rinsing



06
Drying



07
Lubrication



08
Packaging



09
Sterilization

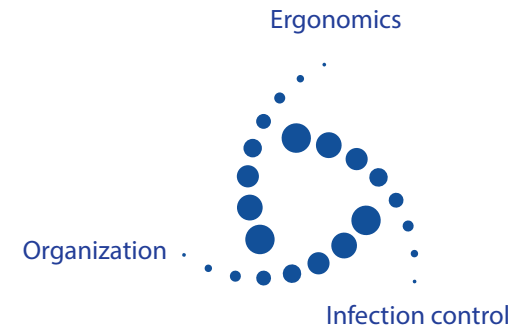


10
Storage

Operatory Design

The Evolution cabinetry series, following the same design criteria of generations of the Steri-Center, assure compliance of dental infection control standards and protocols and designed with details to enhance practice efficiency.

The Evolution working environment offers more than a conventional cabinet—it is an integral part of your team, like a co-worker in perfect synergy with your work processes.

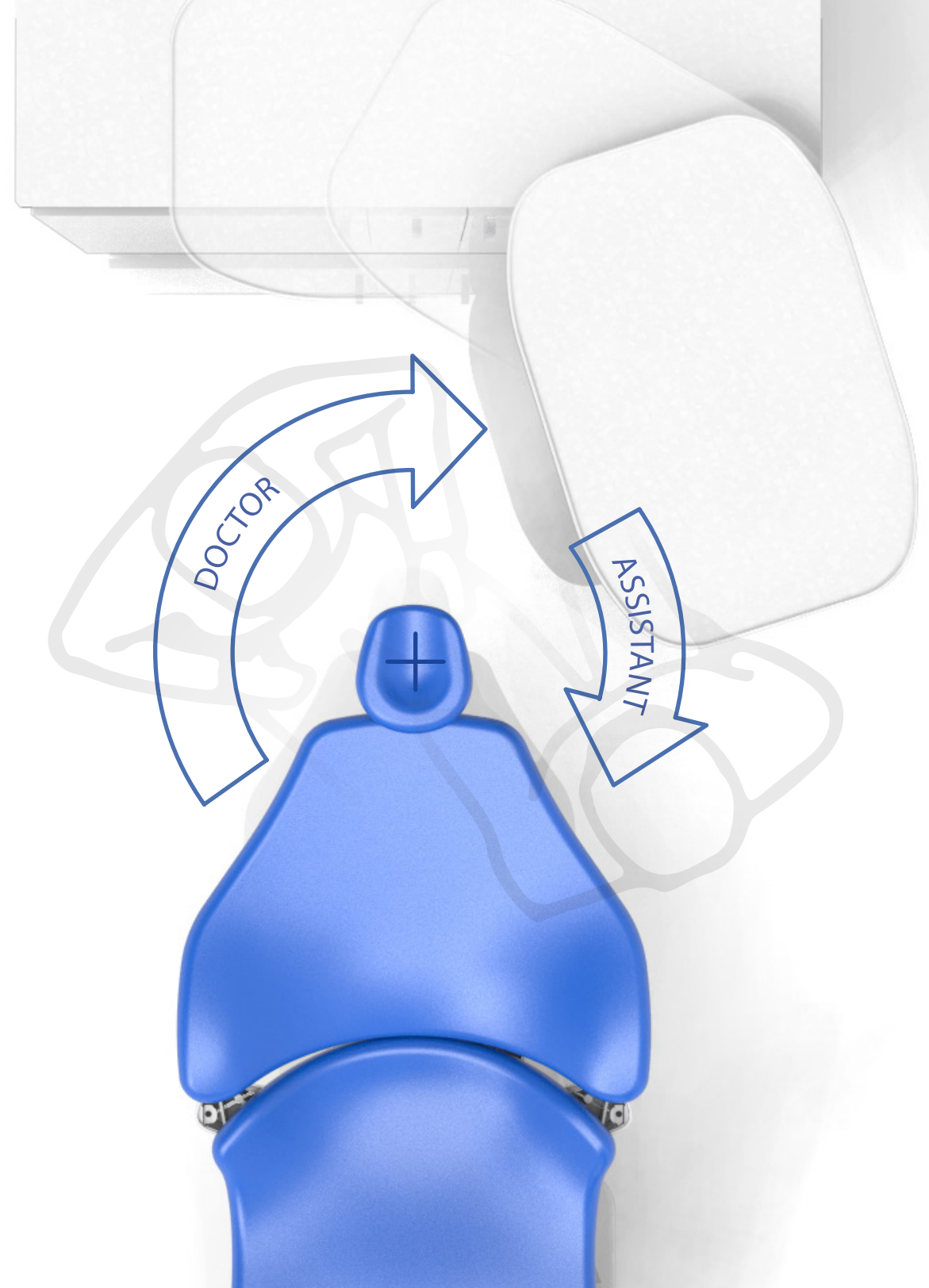


Ergonomics Placed at the Heart of Design

The Evolution working environment is perfectly suited to working individually or with an assistant, and for both right- and left-handed users. Instruments and equipment required for treatment, are placed on a dedicated patient area, near to the treatment area, allowing for optimum access via the smooth movement of the patented satellite work surface.

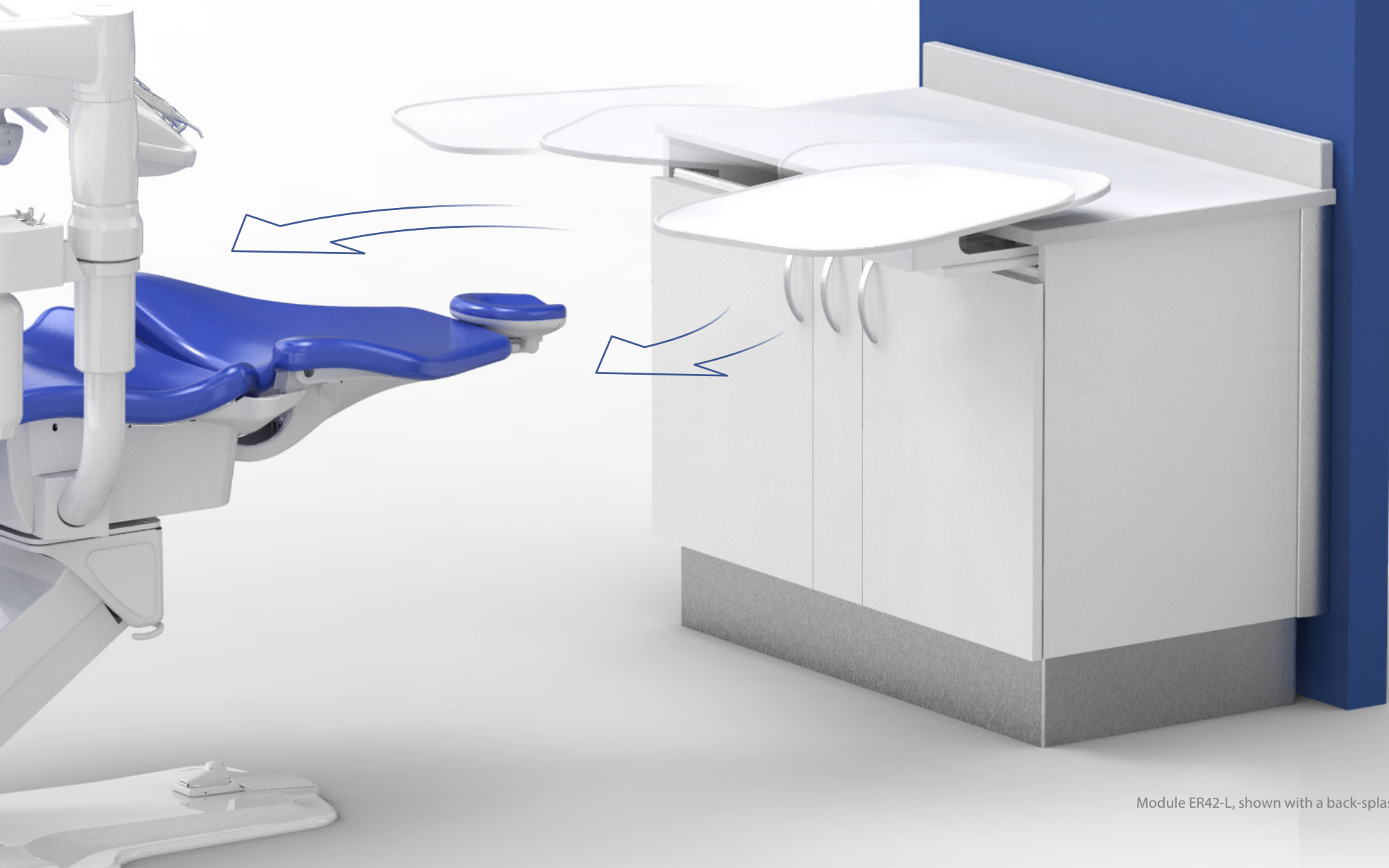
The Oral Cavity is at the Center of the Workspace

Thanks to its movement mechanism on three axes and its decentralized pivot point, the work surface moves around the patient's head, perfectly following the working positions of the practitioner and the assistant.



Satellite Work Surface

The “satellite work surface” is fully ambidextrous and can be placed in multiple positions around the patient’s head to provide optimal access for the practitioner and the assistant. The satellite work surface mechanism uses the minimum amount of space to give maximum clearance for the knees.



Module ER42-L, shown with a back-splash option

Instrumentation support holder

The assistant's instrumentation support holder is compatible with the Planmeca Emerald™ S scanner cradle, and can be located in any position on the satellite work surface to meet the assistant's preference.

Corian® working surfaces

The Corian surface has a raised outer rim that ensures that whatever is placed there remains there.

*Corian® is a solid, homogeneous and non-porous material that facilitates cleaning, disinfection and decontamination, and helps to reduce the risk of cross-contamination. It combines performance and aesthetics, durability and hygiene, making it the material of choice for health-related environments.

Module ER42-L, shown with a back-splash option





Equipment Organization in Three Steps

- 1 Supplies specific to each treatment are arranged in colored tubs. Before treatment, the required color tub is placed in the central area. White tubs, containing equipment common to a number of procedures, are kept in the central area.
- 2 The central area, which is accessible from a sitting position, eliminates the need to lean over to take materials from a drawer or cabinet. The contents of the tubs are protected from aerosols by doors that are folded out of the way when opened.
- 3 Once treatment has been completed, the colored tub is returned to the upper storage.

The Integration of Digital Technology

Flexible and efficient digital integration solutions.



Ventilated storage for a
desktop computer tower

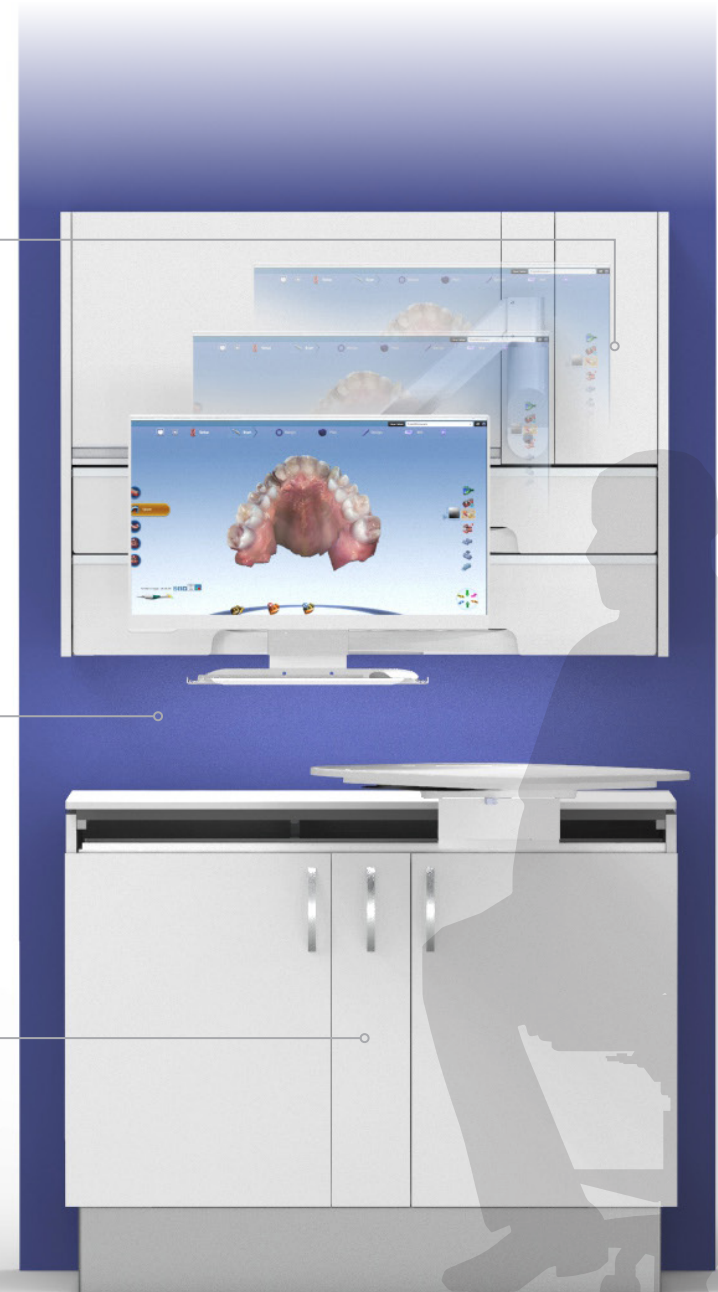
Internal dimensions:
6" (15 cm) W x 13.75" (35 cm) D x
15.15" (38.5 cm) H

LED lighting



Powered USB 3.0 port

9 m cable included

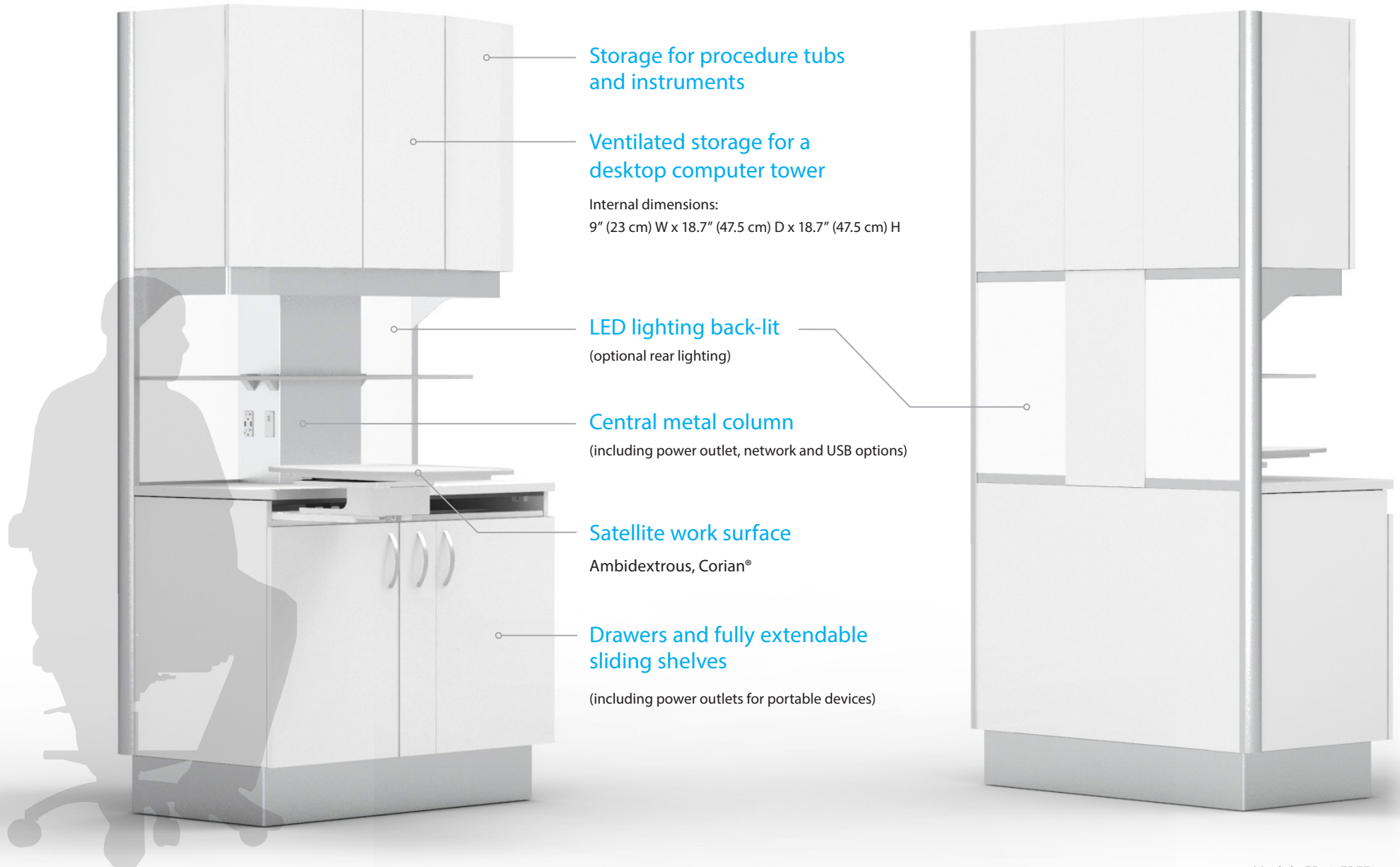


(wall-mounted unit available only)

Module ER42-L + UMLT1035-CPU-ARM + CM2

The Rear Console — Free-standing Configuration

A solution for open or semi-open clinic layout, with or without a rear wall.



Storage for procedure tubs and instruments

Ventilated storage for a desktop computer tower

Internal dimensions:
9" (23 cm) W x 18.7" (47.5 cm) D x 18.7" (47.5 cm) H

LED lighting back-lit
(optional rear lighting)

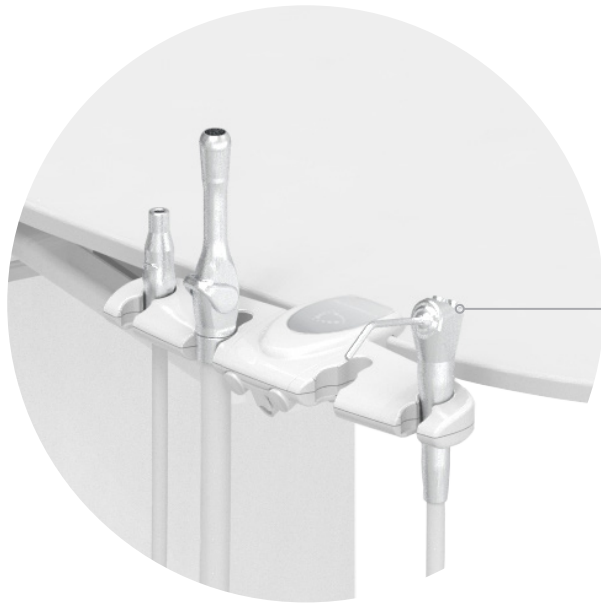
Central metal column
(including power outlet, network and USB options)

Satellite work surface
Ambidextrous, Corian®

Drawers and fully extendable sliding shelves
(including power outlets for portable devices)

Available Options

A wide range of options to further personalize the operator.



Glass doors and
pass-through storage

Pivoting and sliding
monitor arm

Assistant's
instrumentation

Glass shelf



*Contact your distributor for more available options.

Module ER42-U-PASS, U-WINDOW, C-ARM, L-VAC-1

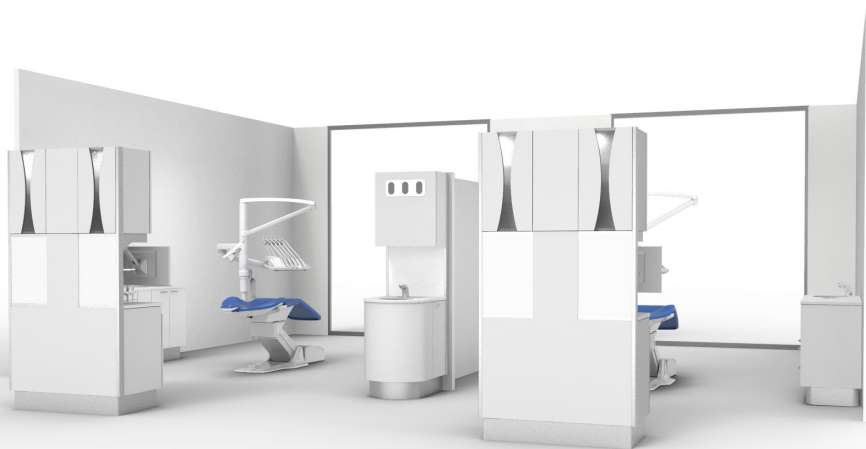
Other Configurations



Side modules: LMS650s + LMBW250s + LMP4s
Rear modules: ER42-FREE
Central module: EC1114



Rear modules: MMS650 + ER42-L+CM2-CPU-ARM + MMD5-4

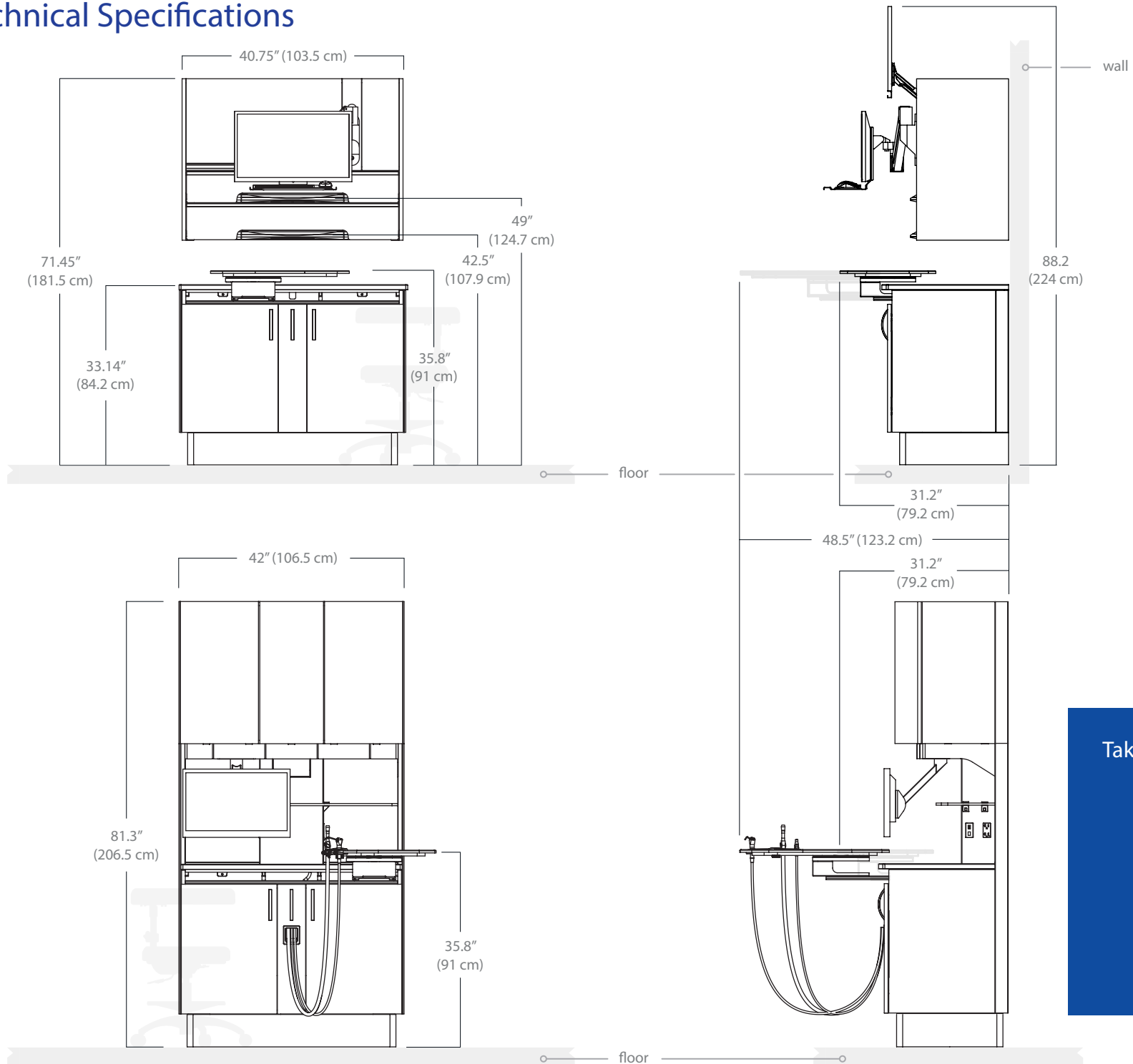


Side modules: LMS650s + LMBW250s + LMP4s
Rear modules ER42-FREE
Central module: ESINK



Rear modules: Module UMLH650 + UMLT4 + UMLT5 + UMLT4
and
LMS650 + LMD4-5 + MLT6 + LMC3

Technical Specifications

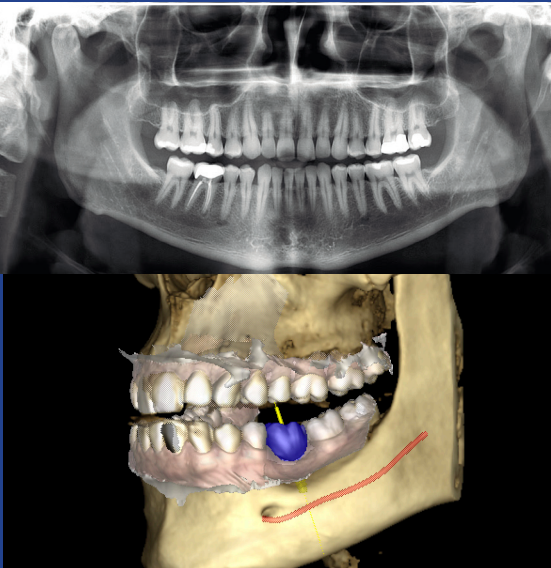


Take a look at our selection of standard finishes.



SCAN THE CODE

2D/3D Imaging



CAD/CAM



Cabinetry



Dental Units



At Planmeca, we do things differently. We are in a unique position as one of the largest, privately owned dental manufacturers in the world. It means we set our own priorities. Our Finnish-based research and development team collaborate with industry thought leaders around the globe to reach higher and bring superior products to the dental space.

For more information on dental cabinetry, please contact:

Triangle Furniture Systems, Inc.

(877) 424 4040

(630) 529 2300 | www.planmeca.com

Images may contain optional items not included in standard delivery. Available configurations and features may have country or area specific variations. Some products displayed above may not be available in all countries or areas. Rights for changes reserved.

© 2021 Planmeca U.S.A. Inc. All Rights Reserved. PMCA-COR-BR0003A CAN 09/21



PLANMECA
Better care through innovation